



CHILHAM VILLAGE HALL

HIRING THE VENUE



THE HALLS

Any of the three halls can be hired individually, or you can choose to rent two adjoining halls or all three, depending on your needs. Outside, there is an area for hog roasts or BBQs, with ample space for 100 cars to park off-road.

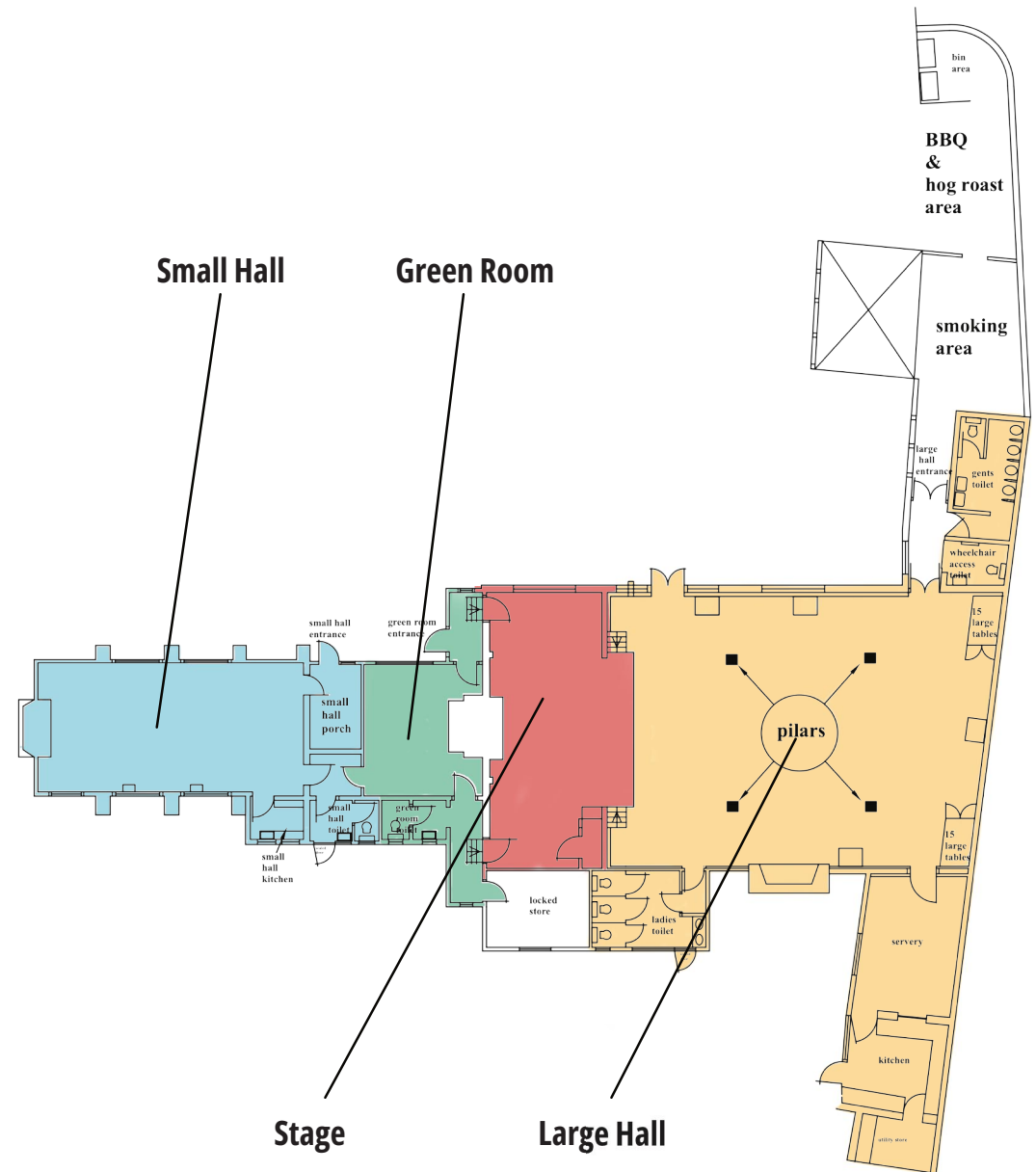
The Large Hall has a capacity of 130 people seated at tables or 200 for dancing, making it perfect for wedding receptions, parties, concerts, and drama performances. It is equipped with a well-provisioned kitchen and servery. The hall also includes male, female, and disabled toilets, along with a baby changing area. Stage lighting is available upon request.

The Small Hall is ideal for more intimate, quieter events, such as wedding ceremonies, with a capacity of 50 seated. It has a small kitchen attached and a toilet.

The Green Room can accommodate 10 people seated and includes a toilet. It is suitable for small meetings, as an off-stage area, or as a private space for brides.

All halls come equipped with tables and chairs for your use.

We are allocated 15 pay-bars each year, which are distributed on a "first come, first served" basis.





THE LARGE HALL

The hall's capacity varies depending on the event type, accommodating up to two-hundred people for close-seated or dancing events, and up to one-hundred and thirty guests when seated at tables.

The main area of the hall measures 10 meters in width and 13 meters in length. It features a large, closed-off fireplace on the side wall and two sets of steps leading to the stage. Four roof support columns are centrally located, forming an approximately 5-meter square.

Female toilets are located within the hall, while male toilets, wheelchair-accessible facilities, and a baby changing unit are situated in the entrance passageway.

Heating is provided by four fan-assisted, thermostatically controlled gas heaters. Please note that smoke machines are not permitted anywhere in the building.

Lighting is provided by fluorescent tubes. For ambiance, the hall is equipped with two dimmable chandeliers, dimmable colored spotlights (two on each column), and single switched spotlights on each column.

THE STAGE + GREEN ROOM

The stage measures approximately 10 meters in width and 4.5 meters in depth, featuring fixed side and rear curtains, along with an opening front curtain. Two doors, located stage left and right, provide access to the Green Room. The left-hand door also leads to a toilet, offering convenience for on-stage performers.

Additional stage lighting can be arranged for a small extra fee.

The Servery and Kitchen is opposite the main entrance.

For backstage access, a Youngman 7-step 'A' frame ladder is positioned on the left at the rear of the stage, while a Youngman Combi-100 ladder, with a max working height of 7.22 meters, is located on the right at the rear of the stage.

...

The Green Room traditionally served as a waiting area and lounge for performers before and after a performance, as well as during the show when they were not on stage.

The room can comfortably accommodate up to 12 people seated at tables. It measures approximately 5 meters in width and 3 meters in length and features a closed-off fireplace. There is access to a restroom (not wheelchair accessible), but no tea or coffee facilities are available. The room is heated by an electric fire located in the fireplace.





THE SMALL HALL

The small hall can accommodate up to 50 people for close-seated events and up to 40 when seated at tables. The hall, measuring approximately 5 meters in width and 9.5 meters in length, features a large closed-off fireplace, an entrance lobby/cloakroom, a kitchen, and a toilet.

The kitchen, located opposite the main entrance, is equipped with tea and coffee facilities as well as a microwave oven.

Lighting is provided by fluorescent tubes. LED floodlights mounted on the cross-beams can illuminate the roof space, creating mood and ambiance lighting. Ceiling fans can be operated manually or set to automatic.

The toilet, which is not wheelchair accessible, is located in the passageway to the left of the kitchen. Heating is provided by two gas fires.

BOOKING

The hire charge includes almost everything, with the exception of events that require a Registrar (a fee is charged to cover the cost of our licence) and the use of stage lighting, for which an additional charge applies.

We are allocated 15 pay-bars each year, distributed on a "first come, first served" basis. If you are not allocated one, unfortunately, you cannot have a pay bar, regardless of what your caterer or mobile bar provider may suggest.

Candles are permitted, provided they are placed in stable, flame-resistant, and heatproof containers. BBQs and hog roasts are allowed as long as they are conducted in the open air on the hard standing near the entrance.

Please note that fireworks are not permitted due to the close proximity of livestock.

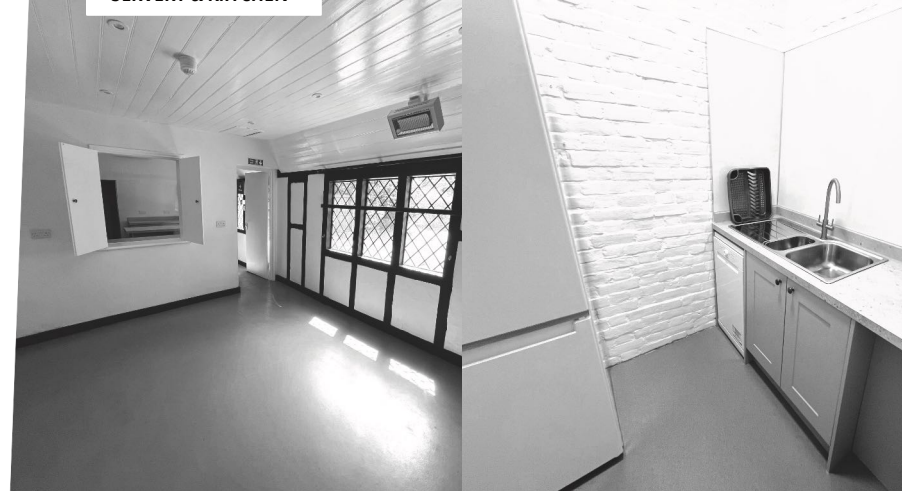
For more information, please email

bookings@chilhamvillagehalls.com

Or contact Julie Sherrin, the letting secretary, on 07975 754131.

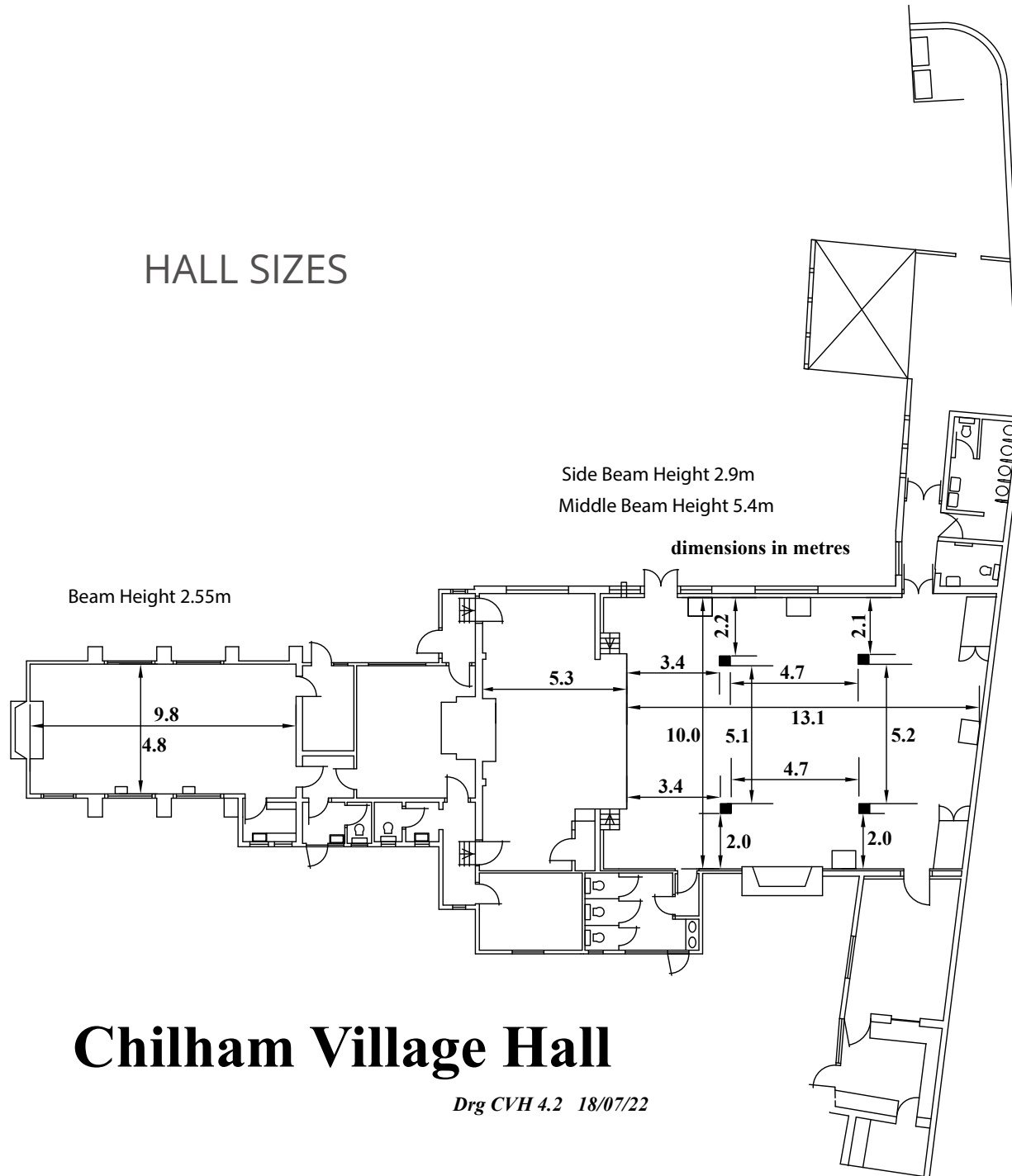


SERVERY & KITCHEN



THE GREEN ROOM

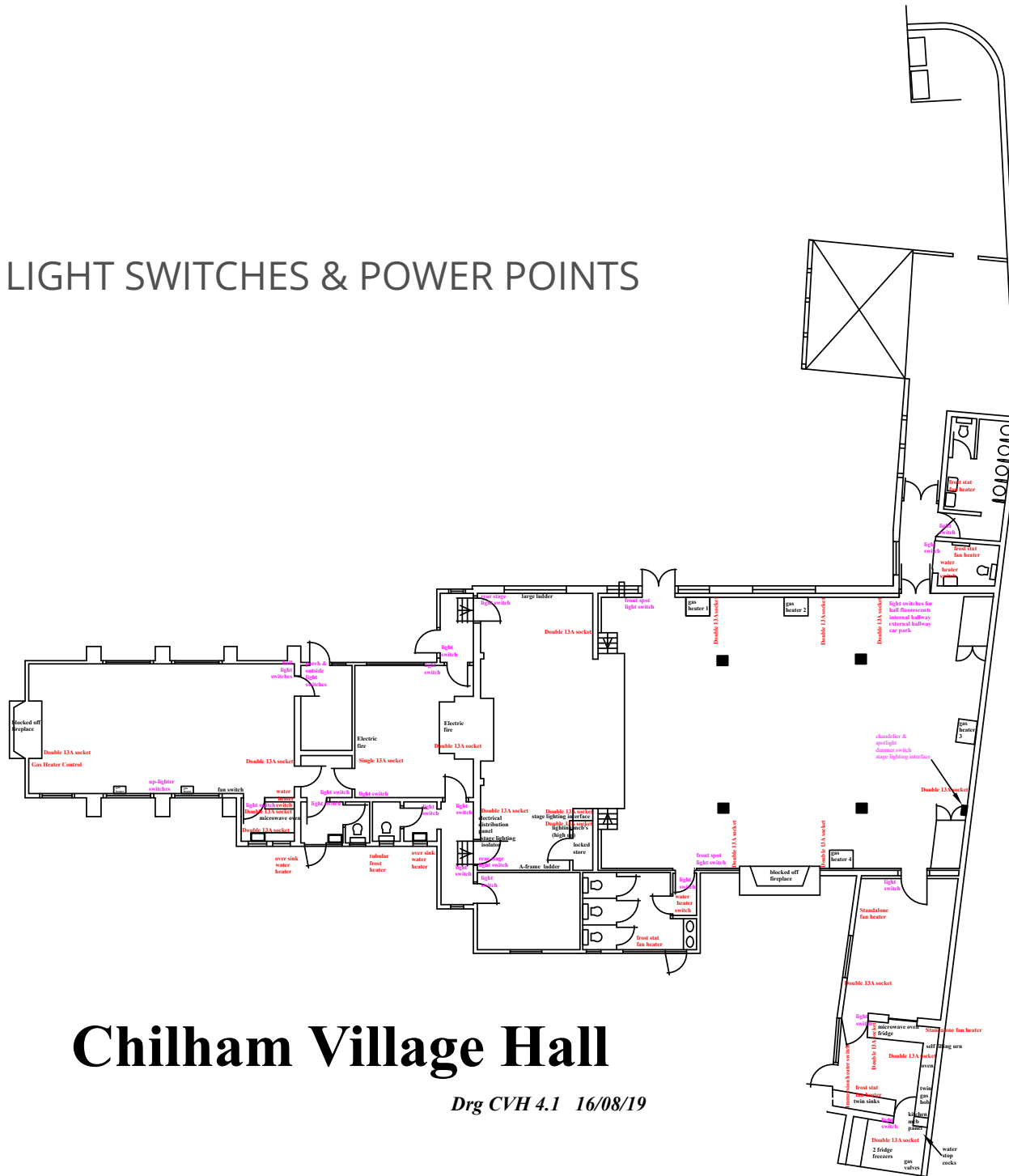
HALL SIZES



Chilham Village Hall

Drg CVH 4.2 18/07/22

LIGHT SWITCHES & POWER POINTS

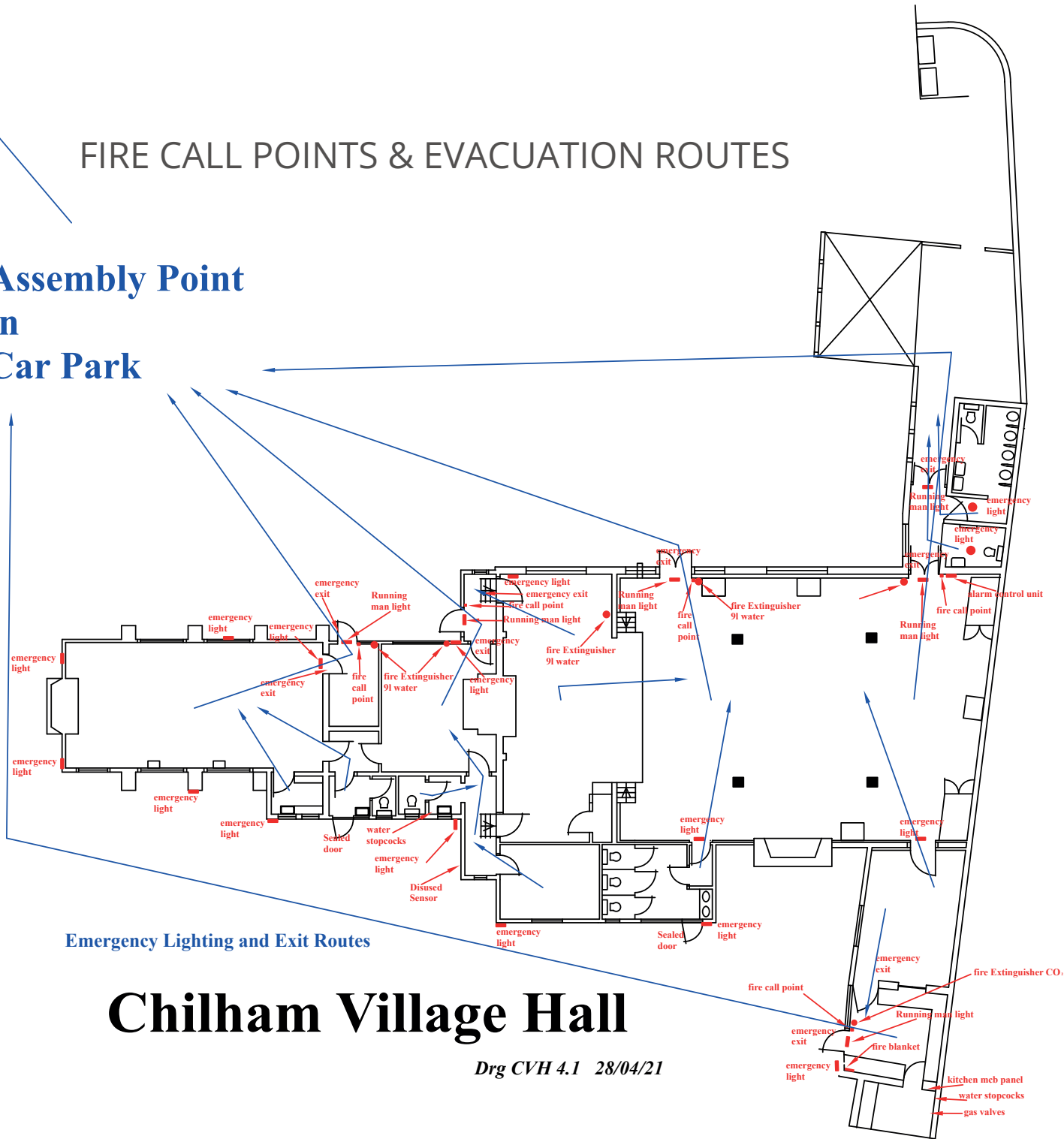


Chilham Village Hall

Drg CVH 4.1 16/08/19

FIRE CALL POINTS & EVACUATION ROUTES

**Assembly Point
in
Car Park**



Emergency Lighting and Exit Routes

Chilham Village Hall

Drg CVH 4.1 28/04/21